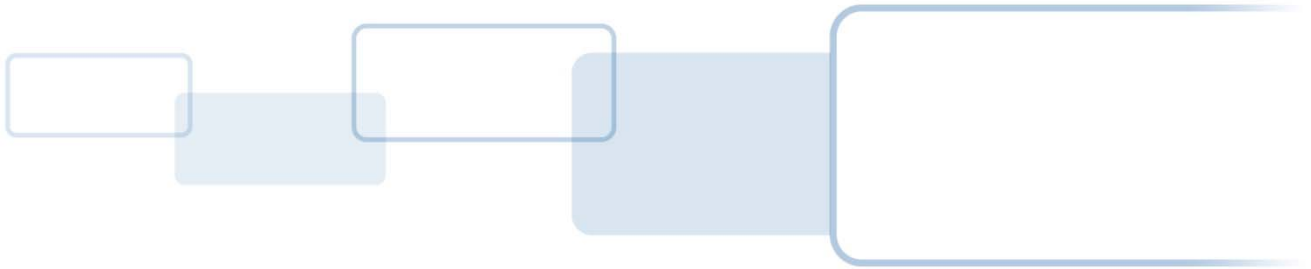




15370 Barranca Parkway
Irvine, CA 92618



FARGO®

Enabling Printer Communication with RFID- Tagged Consumables

APPLICATION NOTE

PLT-01497, Rev A.2

August 2013

© 2013 HID Global Corporation/ASSA ABLOY AB. All rights reserved.

Contents

About this Guide	4
Purpose	4
Audience.....	4
Scope	4
1 Enabling Consumable Printer Communication	4

Copyright

© 2013 HID Global Corporation/ASSA ABLOY AB. All rights reserved.

Trademarks

HID GLOBAL, HID, the HID logo, iCLASS and SIO are the trademarks or registered trademarks of HID Global Corporation, or its licensors, in the U.S. and other countries.

Revision History

Date	Author	Description	Document Version
07/15/2013	L. Bayer	Initial version	A.0
8/8/2013	R.Stoeckicht	DTC55-LC to DTC550LC on pg 4	A.1
8/27/2013	J. Nippoldt	Added HDPii to Audience on page 4	A.2

Contacts

If you purchased your product from a third party, contact that third party for Technical Support. For products purchased directly from HID, use the following Technical Support contact information.

North America	Europe, Middle East and Africa
15370 Barranca Parkway Irvine, CA 92618 USA Phone: 800 237 7769 Fax: 949 732 2120 Tech Support: 866 607 7339, #6, M-F 7am-6pm CST	Phoenix Road Haverhill, Suffolk CB9 7AE England Phone: +44 1440 714 850 Fax: +44 1440 714 840 Tech Support: +44 1440 711 822 M-F 9am – 5pm GMT
Asia Pacific	Brazil
19/F 625 King's Road North Point, Island East Hong Kong Phone: 852 3160 9800 Fax: 852 3160 4809 Tech Support 852 3160 4895 M-F 9am – 6pm GMT +8	Av Guido Caloi 1985 Prédio 18 São Paulo – SP CEP : 05802-140 Phone: 55 11 5514-7100 Fax: 55 11 5514-7109 Tech Support: 55 11 5514-7110 M-F 9am – 6pm ATC

support.hidglobal.com

About this Guide

Purpose

This publication describes the process for enabling a card printer/encoder to communicate with print ribbon and overlamine consumables that have radio-frequency identification (RFID) tags. The affected printers use consumables with tags that must be transitioned to an upgraded RFID technology. The procedure described below supports the transition to the new RFID technology.

Audience

This guide is for users of printers and laminators that receive an error message when trying to use new consumables. Affected printer models include:

- FARGO DTC300 and M30/M30e
- Persona C30/C30e
- FARGO DTC400/ DTC400e
- FARGO DTC550 and DTC550-LC
- FARGO HDP5000 and HDP5000 –LC
- FARGO HDPIi
- FARGO DTC4500-LC

Scope

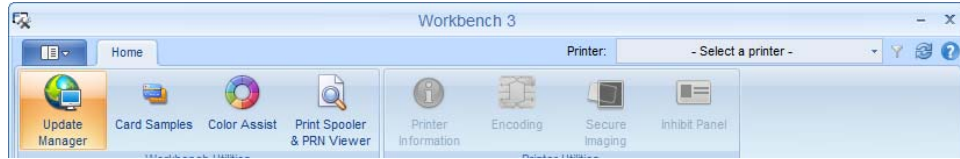
The units affected were typically produced before the middle of 2010. Models shipped after the middle of 2010 already have firmware that supports the new RFID technology.

1 Enabling Consumable Printer Communication

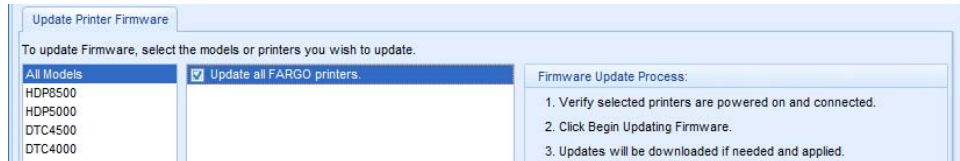
The process to enable a printer to communicate with consumables having new RFID tags is simple.

1. Download the Workbench 3 utility from: <https://www.hidglobal.com/drivers/15325>.
2. Read and accept the End User License Agreement.
3. Click **Open** to open the workbenchsetup .zip file.
4. Double-click the WorkbenchSetup .exe file.
5. Follow the on-screen instructions.

- Open the program and click the **Update Manger** tab.



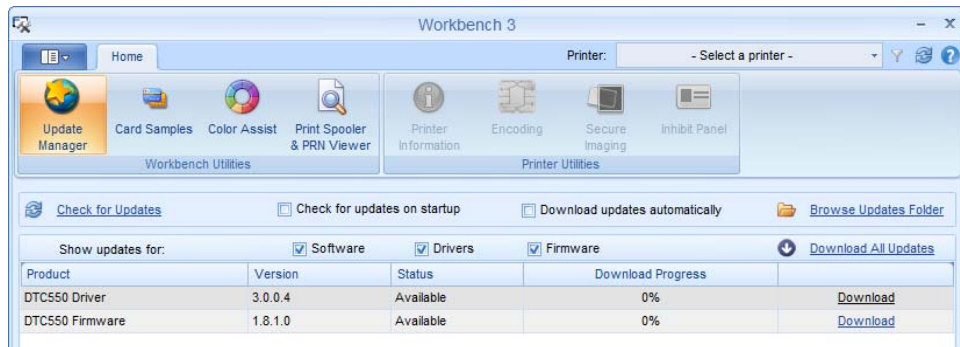
- Select the **Update Printer Firmware** tab and select **Update all FARGO printers**.



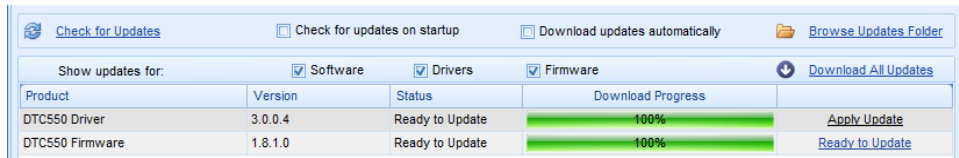
- Ensure that all of the printers you would like to update are connected to the computer and powered on.
- Click **Check for Updates**.



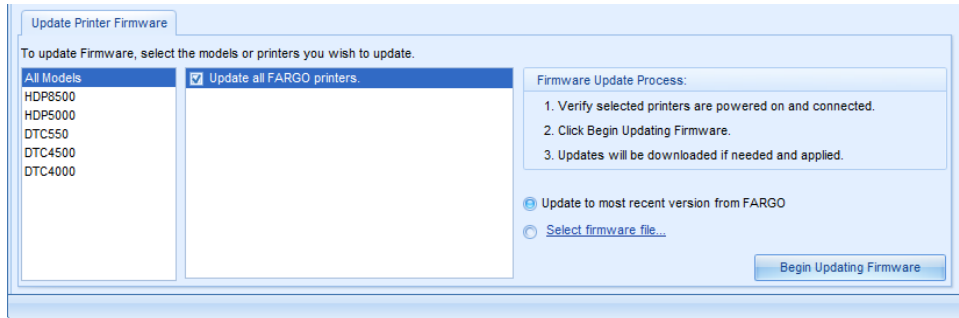
- Available updates display for selection.



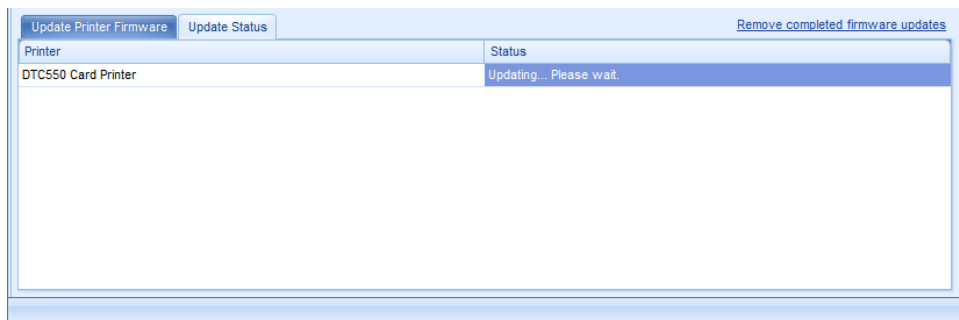
11. Select **Download All Updates**. The updates transfer to the computer.



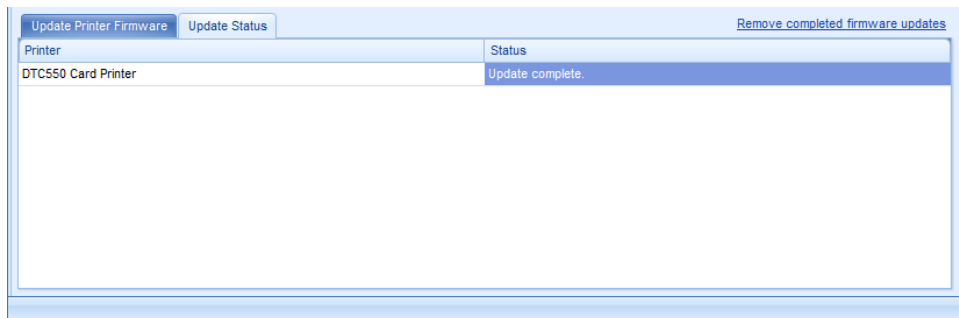
12. To apply the firmware updates, click the **Begin Updating Firmware** button.



13. Firmware will be sent to the printer. Do not disconnect the printer or turn off power to the printer during the update process.



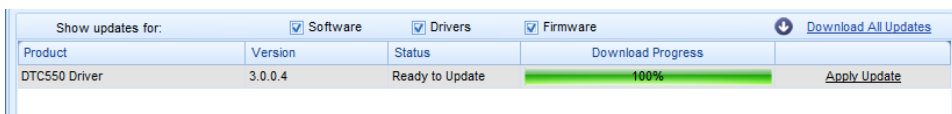
14. When the firmware update is complete, a notice displays.



Firmware updates are now complete.

To ensure the best performance, apply all available driver updates. However, before installing driver updates, existing driver installations must be removed.

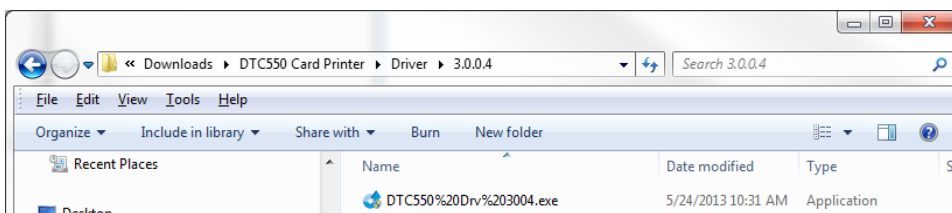
15. To remove the existing printer drivers, navigate to the **Fargo** or **HID Global** folder on your computer and remove the applicable printer models.
Note: Removing the drivers causes any adjustments that were set in the printer drivers to be lost. Most users will not be impacted. However, advanced users must remember to apply the modified settings to the updated driver when installed.
16. After existing drivers have been removed, you must reboot the computer.
17. Go to the **Update Manager** interface within Workbench 3, and click **Apply Update** for the drivers you are updating.



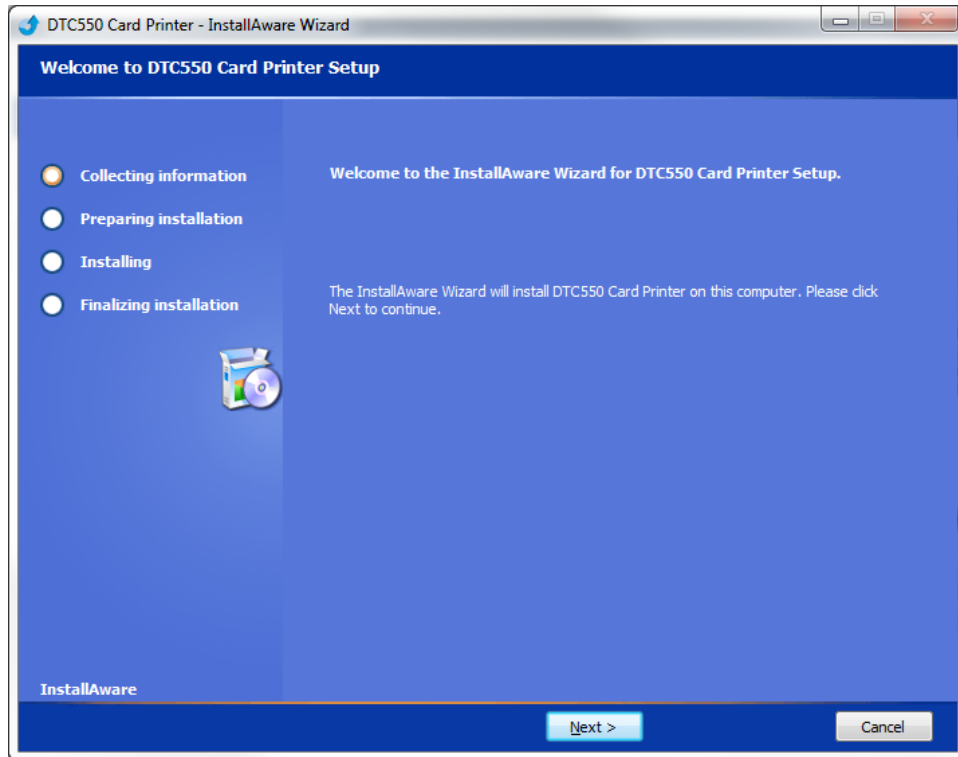
Note: If a driver does not appear, select **Browse Updates Folder** and run the driver update manually.



18. Navigate through the folders until you get to the **.exe** file of the driver you want to install.



19. Open the **.exe** file to run the driver installer.



20. Reboot the computer to complete the driver installation.

HID Global Headquarters:

North America: +1 949 732 2000

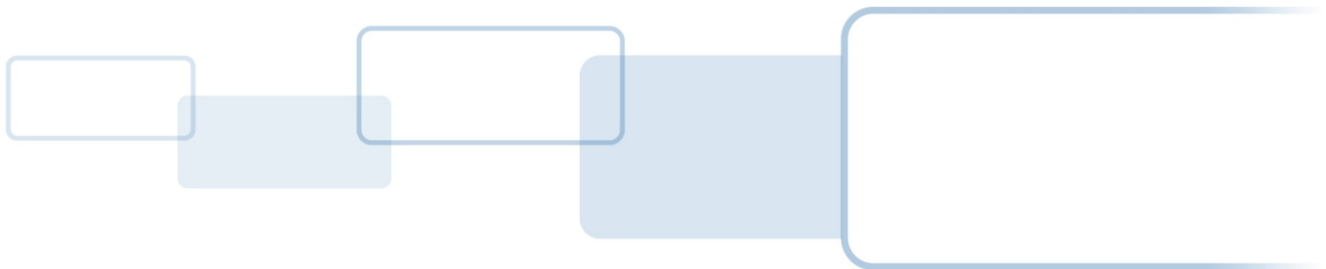
Toll Free: 1 800 237 7769

Europe, Middle East, Africa: +49 6123 791 0

Asia Pacific: +852 3160 9800

Latin America: +52 477 779 1492

support.hidglobal.com



hidglobal.com